

Local context

Local Covid-19 data

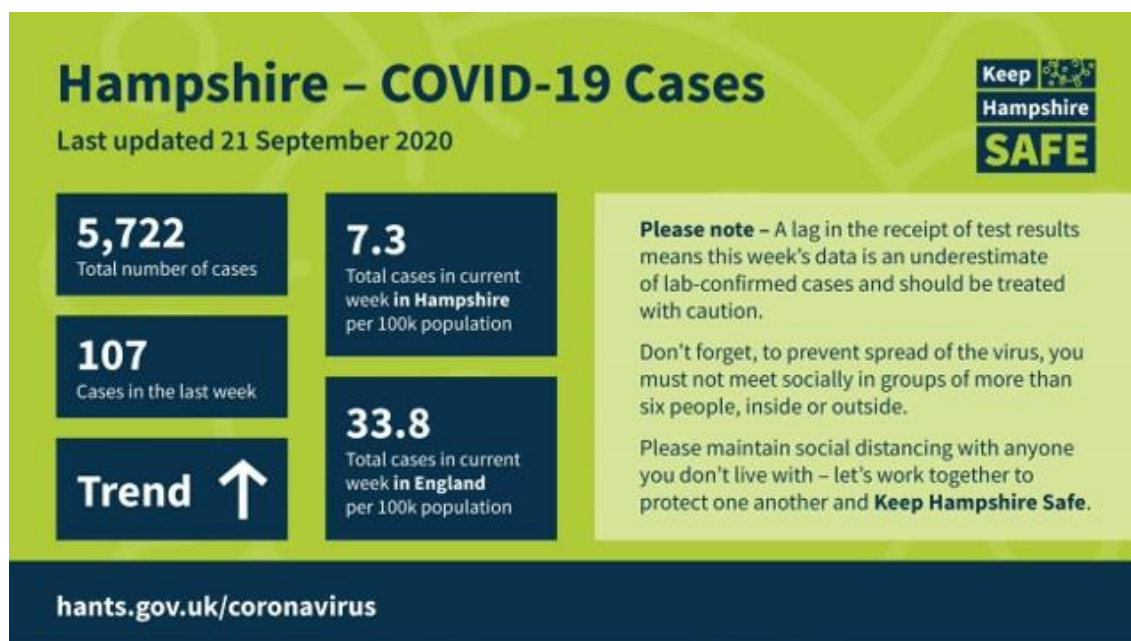
The County Council has [published](#) the latest weekly data dashboard. The data shows a total number of cases in Hampshire of 5,772 and 107 cases in the last seven days.

Hampshire's overall infection rate is 410.3 cases per 100,000 population. The county's current weekly rate stands at 7.3 cases per 100,000 population, compared to the England weekly rate of 33.8.

Please note that a lag in the receipt of test results means this week's data is an underestimate of lab-confirmed cases and should therefore be treated with caution.

There have been 1,065 Covid-19 associated deaths in Hampshire since March, and 2 deaths in the last seven days – the overall trend in the number of deaths continues to decline.

The full data dashboard is available on the [Keep Hampshire Safe webpage](#). [Data on Hampshire districts](#) is also available.



Financial impact

Hampshire County Council's Cabinet will next week (29 September) consider a [report on the financial position](#) for the County Council in view of the impact of the Covid-19 pandemic. The report provides a snapshot of the latest position compared to that reported to Cabinet and County Council in July as part of the update of the Medium Term Financial Strategy.

In the [press release](#), the Leader, Councillor Keith Mans, is quoted: "Our exposure to Covid-19 is currently expected to cost us in the region of £83 million this year. Fortunately, Hampshire was in a strong financial position before coronavirus hit,

thanks to our strong track record of careful and consistent budget planning alongside the prudent use of our reserves. As such, we have put plans in place so we can weather the storm this year... However, moving into the medium term, the situation worsens as we also take stock of growing demand in adult social care which we expect to increase further as a result of the pandemic, further lost income and council tax revenue, and the costs of responding to any subsequent coronavirus outbreaks. It means that our total unfunded costs and losses rise to around £210 million over the next three years – with the need for at least £52 million from Government in order to remain financially viable in the future.”

The [Local Government Chronicle](#) has today published an article on the County’s financial position with information from the report and quotes taken from the County Council’s own press release.

Hampshire Hospitals

Hampshire Hospitals NHS Foundation Trust (HHFT) has [announced](#) that over 150 nurses have graduated from the Critical Care Academy two week training programme. The academy was initially established at the start of the pandemic to help registered nurses develop the skills needed to care for the most critically ill patients, and support the intensive care units in the event of an increased number of acutely unwell patients coming into hospital. The academy forms part of HHFT resilience planning for a possible second wave combined with winter pressures.

In addition, HHFT has [announced](#) that it has been shortlisted for four Nursing Times awards, which celebrate exceptional achievement and excellence in nursing and patient care. The Children's Home Acute Team (CHAT), based in Basingstoke, has been shortlisted in three categories – Nursing in the Community, HRH Integrated Approaches to Care, and Children’s Services. To manage the pressures of Covid-19, the CHAT team developed a Covid pathway to work alongside GPs, in order to minimise the impact on their service. Any child with suspected Covid-19 would be safely visited at home, to prevent the child coming into hospital. The team will continue to take this approach throughout winter.

National context

Prime Minister’s address - 22 September

The Prime Minister, Boris Johnson, announced further restrictions in a [statement on Covid-19 to the House of Commons](#) and later in a televised [address to the nation](#).

In summary, the new national restrictions are:

1. Office workers who can work from home are being asked to do so.
2. From Thursday (24 September), all pubs, bars and restaurants must operate table-service only, except for takeaways.
3. All hospitality venues must close at 10pm.
4. More people must wear face coverings - staff working in retail; all users of taxis and private hire vehicles; and staff and customers in indoor hospitality venues - except when seated at tables to eat or drink.

5. In retail, leisure, tourism and other sectors, government's Covid-secure guidelines will become legal obligations.
6. From Monday (28 September), a maximum of 15 people will be able to attend wedding ceremonies and receptions, up to 30 people may attend a funeral.
7. The rule of six is being extended to all adult indoor team sports.
8. Business conferences, exhibitions and large sporting events will not be able to reopen from 1 October as originally planned.
9. The penalty for failing to wear a mask or breaking the rule of six will double to £200 for a first offence.
10. Police and councils will be provided with extra funding for enforcement.
11. For those shielding, the guidance remains that you do not need to shield unless you are in a local lockdown area.

Chief Scientific Advisor and Chief Medical Officer briefing - 21 September

The Chief Scientific Advisor, Patrick Vallance, and Chief Medical Officer, Chris Whitty, [delivered](#) a televised data briefing to the nation on Covid-19 on Monday 21 September.

The press conference slides are available to [view online](#).

Covid-19 alert level

The [COVID-19 alert level](#) was moved from level 3 (Covid-19 epidemic is in general circulation) to level 4 (Covid-19 epidemic is in general circulation, transmission is high or rising exponentially) as recommended by the Joint Biosecurity Centre and agreed by the CMOs for England, Scotland, Wales and Northern Ireland.

Communities

Self-isolation

The Government has [announced](#) a new package to support and enforce self-isolation. From 28 September, people will be required by law to self-isolate when instructed to by NHS Test and Trace. Those on lower incomes who cannot work from home and have lost income as a result will be supported by a payment of £500.

In addition, new fines for those breaching self-isolation rules will start at £1,000 – bringing this in line with the penalty for breaking quarantine after international travel – but could increase to up to £10,000 for repeat offences and for the most egregious breaches, including for those preventing others from self-isolating.

NHS Test and Trace records

The Department of Health and Social Care (DHSC) has [updated](#) the guidance for designated venues to reflect the new legal requirements to collect contact details and display official NHS QR code posters.

Local restrictions updates

The Government updated the guidance on local restrictions applying in several areas in England including: [Bolton](#); [Greater Manchester](#); [West Yorkshire](#); [North West of England](#); [North East of England](#); [West Midlands](#) and; [Leicester](#).

In addition, the Government updated the guidance on local restrictions with new sections on shielding applying in the [North West of England](#) and [Leicester](#).

Renting

The Ministry of Housing, Communities and Local Government has [updated](#) the non-statutory guidance for landlords, tenants and councils in the private and social rented sectors in the context of Covid-19. The guidance for landlords and tenants and technical guidance on eviction notices have been updated to reflect new regulations for the possession action process.

Criminal justice system

HM Courts and Tribunals Service has [announced](#) eight additional 'Nightingale Courts' as part of plans to tackle the impact of Covid-19 on the justice system. The Nightingale Courts will hear non-custodial criminal cases, as well as dealing with civil, family and tribunals matters. The aim is to free up more room in existing courts to hear other cases, including custodial jury trials, which require cells and secure dock facilities.

Children and education

Childcare

DHSC has [announced](#) that informal childcare and caring arrangements will be allowed to continue. Informal carers will be able to provide care for children and vulnerable adults in parts of the country which have restrictions on inter-household mixing. Children under 14 will be able to be cared for by individuals outside of their immediate household as part of a care bubble.

Catch-up premium: provisional allocations

The Education and Skills Funding Agency has [published](#) the Covid-19 catch-up premium provisional allocation tables and conditions of grant for the academic year 2020 to 2021.

School meals

The Department for Education (DfE) has [updated](#) the guidance on free school meals to include a new link to guidance on free school meals from the Lead Association for Catering in Education.

NHS COVID-19 app

The Government has [issued](#) guidance for schools and further education colleges when using the NHS COVID-19 app in education settings.

Test kits for schools

The DfE has [updated](#) the guidance on test kits for schools and FE providers to confirm that schools and FE providers ordering additional test kits will be provided with one box of 10 kits per 1,000 pupils or students.

Adults' social care and public health

Flu vaccine

Public Health England has [published](#) new research which suggests the risk of death more than doubled for people who tested positive for both flu and Covid-19, compared to those with Covid-19 alone.

Adult social care winter plan

The Minister for Care, Helen Whately, has [written](#) to local authorities to outline the expectations of local authorities in relation to the [adult social care winter plan](#) published on 18 September.

Emergency support instrument

DHSC has [confirmed](#) that the UK has secured £31 million in funding through the European Union's mobility package to assist the UK's Covid-19 response. The funding will go towards some of the costs associated with the transporting of equipment and items of personal protective equipment to the UK from overseas.

Economy and business

Housing market

The Treasury has [reported](#) that residential property transactions continued to increase in August following the introduction of the stamp duty holiday.

Environment, transport and travel

Safer travel

The Department for Transport has [updated](#) the safer travel guidance to reflect new legislation on social contact and the requirement for passengers to wear face coverings in taxis and private hire vehicles.

Travel corridors

On Saturday (19 September) the Government [updated](#) the travel corridors list by adding Singapore and Thailand, and removing Guadeloupe and Slovenia.

National Covid-19 data

As of 4pm on 23 September, the total number of lab-confirmed cases was **409,729**. The daily number of lab-confirmed cases was **6,178**. The total number of Covid-19 associated deaths within 28 days of a positive test was **41,862**, with **37** deaths reported on the day. The data is available to [view online](#).

The R number range for the UK is **1.1-1.4** and the growth rate range is **+2% to +7%** per day as of 18 September.

Additional links

- Hampshire County Council webpages on coronavirus (including links to press releases): <https://www.hants.gov.uk/socialcareandhealth/coronavirus>
- Latest information on coronavirus: <https://www.gov.uk/coronavirus>
- NHS information on coronavirus: <https://www.nhs.uk/conditions/coronavirus-covid-19/>
- FAQ from the Cabinet Office: <https://www.gov.uk/government/publications/coronavirus-outbreak-faqs-what-you-can-and-cant-do/coronavirus-outbreak-faqs-what-you-can-and-cant-do>
- PPE guidance hub: <https://www.gov.uk/government/collections/coronavirus-covid-19-personal-protective-equipment-ppe>

- Guidance for local government:
<https://www.gov.uk/guidance/coronavirus-covid-19-guidance-for-local-government>
- County Councils Network (CCN) coronavirus information pages:
<https://www.countycouncilsnetwork.org.uk/coronavirus-information-for-local-authorities/>
- Local Government Association (LGA) councillor guidance: <https://www.local.gov.uk/covid-19-outbreak-councillor-guidance>

Deborah Harkin
Assistant Chief Executive