

Local context

Testing sites in Hampshire

The County Council will today issue a [press release](#) to announce that five new testing sites are to open across Hampshire over the next two weeks. The new site locations are in:

- Aldershot
- Basingstoke
- Gosport
- Havant
- Winchester

The specific locations of the new sites and more information about opening hours will be published ahead of each new site becoming operational later this month. The sites are designed for people who have booked a test in advance – there is no drop-in facility available.

This new testing provision boosts the current capacity of the permanent regional testing centre at Southampton Airport, as well as the three Mobile Testing Units which are deployed around the county to wherever there is greatest need.

Hampshire County Council, working closely with Hampshire and Isle of Wight Local Resilience Forum partners, is responsible for arranging the testing locations in the area. The provision and availability of testing is led by the Department of Health and Social Care.

In the press release, Councillor Keith Mans, Leader of Hampshire County Council and Chair of Hampshire's Local Outbreak Engagement Board, reminds residents that: "It is important that anyone with symptoms – however mild – seeks a test promptly. It is equally important that those who do not have symptoms refrain from booking a test, in order to manage demand and to ensure that tests are available for those who really need one. We would also remind residents that they should return home immediately after their test and remain in self-isolation whilst awaiting their results."

Flu vaccination campaign

Hampshire County Council launched a flu campaign at the end of September for both staff and Hampshire residents. There have been wide ranging internal communications urging high risk groups and eligible staff to book their free flu vaccination as soon as possible. For Hampshire residents, a weekly schedule of social media messages is being deployed throughout the season on Corporate and Public Health channels. These are aligned with NHS communications and target specific groups week by week, including pregnant women, parents of 2 to 3 year olds, carers, people aged over 65 years and people with long term health conditions. In addition, a campaign on Mumsnet will support the messaging to pregnant women during October.



Keep Hampshire Safe campaigns

The County Council continues to promote and proactively target key public health messages to Hampshire residents. The below image shows relevant campaigns activity over the last week (9 - 16 October).

A new campaign on [when to get tested](#) will launch today (16 October) on Facebook. The short and informative [animation](#) sets out when someone should get a free NHS Covid-19 test and reminds people of the symptoms.

Social media campaigns

Themes covered

- Local alert levels
- Hampshire Covid-19 data
- Social distancing
- Rule of six
- When to self-isolate
- When to get tested

22

Social media posts

238,058

People reached

97,680

Video views

Most successful post



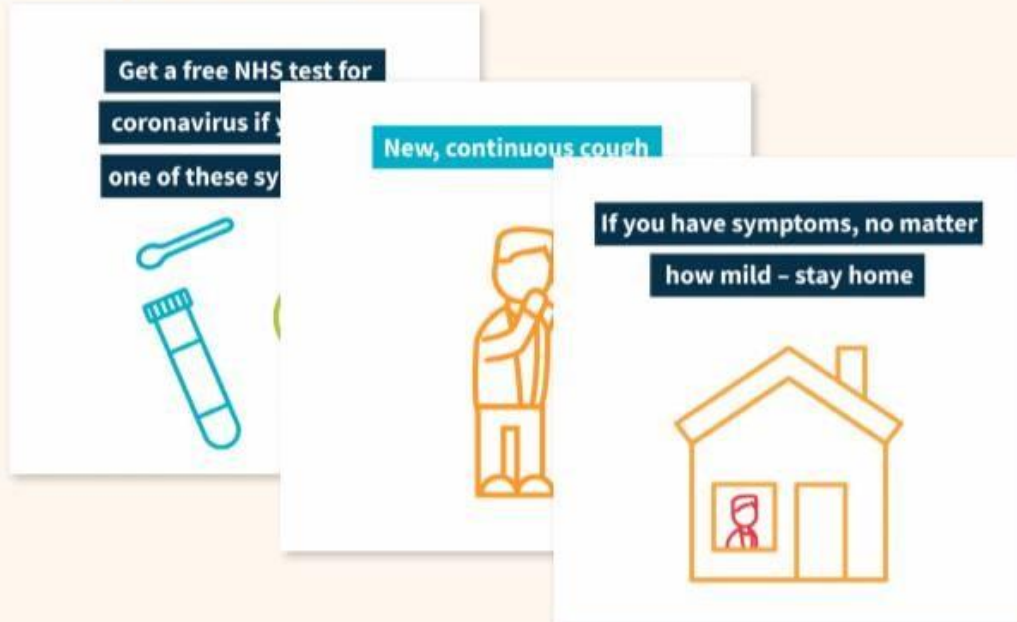
Social distancing animation

15,500

People reached

Example

When to get tested animation



National context

Communities

Local Covid alert levels

The Secretary of State for Health and Social Care yesterday (15 October) provided a [statement](#) to Parliament on the Government's local action strategy and areas of England that will move into the local Covid alert level high from Saturday 17 October. The areas are:

- London (all 32 boroughs and the City of London)
- Elmbridge
- Essex (area covered by Essex County Council only)
- Barrow-in-Furness
- York
- North East Derbyshire
- Erewash
- Chesterfield

The Department of Health and Social Care (DHSC) has also announced today (16 October) that Lancashire will move from local Covid alert level high to very high from Saturday 17 October.

Remembrance Sunday

The Government has [issued](#) information for local authorities on how to ensure those hosting local Remembrance events can do so safely. Measures include keeping numbers to a minimum, focussing attendance on those wishing to lay wreaths and observing social distancing at all times.

The Government has also [asked](#) members of the public to mark this year's Remembrance Sunday service on Sunday 8 November at home rather than at the Cenotaph.

Outdoor events

The Government has [updated](#) the working safely guidance to include information for event organisers and local authorities on outdoor events.

Children and education

Test kits for schools

The Department for Education (DfE) has [updated](#) the guidance for schools and further education providers on the initial supply of Covid-19 home testing kits for pupils, teachers and staff.

Safe working

DfE has [updated](#) the guidance on safe working in education, childcare and children's social care settings to provide information on the care that staff members visiting families in their own homes should take. They also updated the guidance for members of staff who have been in close contact with a symptomatic person who subsequently tests positive.

Adults' social care and public health

Weekly national flu and Covid-19 surveillance reports published

Public Health England has [published](#) weekly the national influenza and Covid-19 report, monitoring Covid-19 activity, seasonal flu and other seasonal respiratory illnesses.

Vaccinations

The Department of Health and Social Care has [announced](#) that following public consultation, changes to the Human Medicines Regulations 2012 will come into force today which will allow more healthcare workers to administer flu and potential Covid-19 vaccines.

NHS Test and Trace

DHSC has [published](#) the latest NHS Test and Trace statistics which show that the number of people testing positive increased by more than 35,000 during the first week of October compared with the previous week. The first week of October saw the service successfully reach 76.8% of people who tested positive and 76.9% of contacts where contact details were provided.

Economy and business

Film and TV Production Restart Scheme

The Government has [confirmed](#) that the £500 million Film and TV Production Restart Scheme officially opens today (16 October). The scheme will allow productions to receive compensation for future Covid-19 related losses.

Environment, transport and travel

Travel corridors

The Government has [announced](#) that Italy, San Marino and Vatican City State have been removed from the travel corridor list this week, meaning that from 4am on Sunday 18 October, people arriving in England from these areas will need to self-isolate.

The Greek island of Crete has been added to the list, having been assessed by the Joint Biosecurity Centre as posing a lower infection risk. From 4am on Sunday 18 October, passengers arriving in England from Crete will no longer need to self-isolate, provided they haven't been in or transited through any other non-exempt countries in the 14 days preceding their arrival.

As of 4pm on 16 October, the total number of lab-confirmed cases was **689,257**. The daily number of lab-confirmed cases was **15,650**. The total number of Covid-19 associated deaths within 28 days of a positive test was **43,429**, with **136** deaths reported on the day. The data is available to [view online](#).

The R number range for the UK is **1.3-1.5** and the growth rate range is **+4% to +7%** per day as of 16 October.

Additional links

- Hampshire County Council webpages on coronavirus (including links to press releases): <https://www.hants.gov.uk/socialcareandhealth/coronavirus>
- Latest information on coronavirus: <https://www.gov.uk/coronavirus>
- NHS information on coronavirus: <https://www.nhs.uk/conditions/coronavirus-covid-19/>
- FAQ from the Cabinet Office:
<https://www.gov.uk/government/publications/coronavirus-outbreak-faqs-what-you-can-and-cant-do/coronavirus-outbreak-faqs-what-you-can-and-cant-do>
- PPE guidance hub: <https://www.gov.uk/government/collections/coronavirus-covid-19-personal-protective-equipment-ppe>
- Guidance for local government:
<https://www.gov.uk/guidance/coronavirus-covid-19-guidance-for-local-government>
- County Councils Network (CCN) coronavirus information pages:
<https://www.countycouncilsnetwork.org.uk/coronavirus-information-for-local-authorities/>
- Local Government Association (LGA) councillor guidance: <https://www.local.gov.uk/covid-19-outbreak-councillor-guidance>

Deborah Harkin
Assistant Chief Executive