

Local context

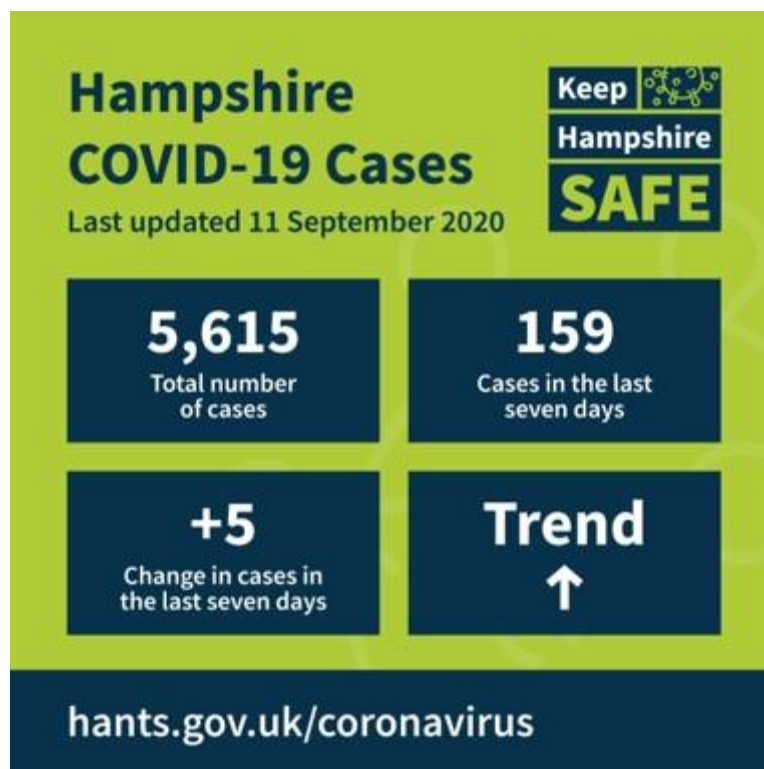
Local Covid-19 data

The County Council has [published](#) the latest weekly data dashboard. The data shows a total number of cases in Hampshire of **5,615** and **159** cases in the last seven days.

Hampshire's overall infection rate is **399.5** cases per 100,000 population. The county's current weekly rate stands at **8.4** cases per 100,000 population, compared to the England weekly rate of 19.7. The overall trend in the infection rate is increasing across Hampshire districts.

There have been **1,063** Covid-19 associated deaths in Hampshire since March, and no deaths in the last seven days - the trend in the number of deaths continues to decline.

The full data dashboard is available on the [Keep Hampshire Safe webpage](#). [Data on Hampshire districts](#) is also available.



Employment and skills

The County Council is ensuring support is in place to help residents secure employment if they have become unemployed, or had difficulty finding work after leaving education or training, due to the Covid-19 pandemic. In the [press release](#), Councillor Roz Chadd, the Executive Member for Education and Skills, is quoted: "In the coming months, the Employment and Skills strategy and plan, developed by our Skills and Participation Service, will put in place a range of measures to boost employment and apprenticeships in Hampshire... it will help to get the county's economy back on its feet by building on, and

complementing, national initiatives to promote employment and reduce the number of people who are out of work, such as the national '[Kickstart](#)' scheme.”

At the centre of Hampshire’s Employment and Skills Strategy are three core principles:

- Skills to meet local need and increase productivity for a prosperous and resilient local economy;
- A local labour market that cultivates talent and creates employment opportunities for all in Hampshire’s communities;
- High-quality skills training infrastructure and facilities to create industry-standard training in young people aged 16 – 24, which raises their aspirations and achievements, as well as meeting employer demand.

Hampshire Constabulary

Hampshire Constabulary has reported that it continues to work to respond effectively to the impact of Covid-19. While the pandemic has placed a strain on the Criminal Justice system, Hampshire Constabulary continue to work with local partners, through the Hampshire Local Criminal Justice Board, to reduce the backlog of cases – by maximising the appropriate use of out of court disposals, mitigating risks caused by delays, and the prioritisation of cases.

In their Covid-19 response, the Constabulary continue their proportionate response to policing delivery following the 4E approach of: Explain, Engage and Encourage, and only resorting to Enforcement as a last resort. Across Hampshire there has been a proactive response to unlicensed music events, and the impact on communities and need to resort to enforcement has been minimal.

National context

Communities

Restrictions on household mixing in Birmingham, Sandwell and Solihull

The Health and Social Care Secretary Matt Hancock, NHS Test and Trace, the Joint Biosecurity Centre, and the Chief Medical Officer for England, Chris Whitty, have [announced](#) (11 September) changes to local restrictions. Birmingham, Sandwell and Solihull have been moved to areas of intervention, while easements in Leicester will continue.

Rule of six

The Government’s [rule of six](#) applies across indoor and outdoor settings from today (14 September), with police able to disperse gatherings of over six people and fine individuals involved. Apart from a set of limited exemptions, including work and education, any social gatherings of more than six people are now against the law. Various pieces of guidance have been updated to reflect the new rule of six, including the [outbreak FAQs](#).

Bills

The Department for Business, Energy and Industrial Strategy has [published](#) advice for those in difficulty with energy, water or telecommunications bills, or repayment commitments on credit cards, loans and mortgages, as a result of Covid-19.

Children and education

Support for students

The Department for Education has [published](#) details on a package of support for students who have to defer their higher education studies. This includes a range of opportunities to gain new skills, undertake work placements, additional learning and career development support.

Adults' social care and public health

Coronavirus: guidance for people receiving direct payments

The Government [changed](#) the document 'Guidance for commissioners, people receiving direct payments and care providers' to 'Guidance for local authorities and clinical commissioning groups in the delivery of direct payments and personal health budgets.' This guidance is no longer aimed at people receiving direct payments and now is aimed at commissioners and local government only.

Hands. Face. Space

To coincide with the new measures being introduced nationally from today (14 September), the Government has launched the '[Hands. Face. Space](#)' [public information campaign](#). It will run across TV, radio, print, out of home, social and digital display advertising, as well as on community media channels in the coming weeks. The Government has [published](#) downloadable advertising assets.

Social care providers

Stuart Miller, Director of Adult Social Care Delivery, has [written](#) to care providers to highlight rising infection rates and request action on testing and PPE in all care settings.

Economy and business

Economic impact of COVID-19

The Commons Treasury Committee has [published](#) a report on the Economic Impact of Coronavirus – the Challenges of Recovery. The report focuses on the medium-term challenges that have emerged as the economy emerges from lockdown including: supporting the recovery of consumer spending, minimising long-term unemployment increases, and dealing with elevated levels of corporate debt. It also examines longer-term issues, such as government debt sustainability.

Working safely

The Government has [updated](#) the working safely guidance to include new priority actions for various businesses and locations.

National Covid-19 data

As of 4pm on 13 September, the total number of lab-confirmed cases was **368,504**. The daily number of lab-confirmed cases was **3,330**. The total number of Covid-19 associated deaths within 28 days of a positive test was **41,628**, with **5** deaths reported on the day. The data is available to [view online](#).

The R number range for the UK is **1.0-1.2** and the growth rate range is **-1% to +3%** per day as of 11 September.

Additional links

- Hampshire County Council webpages on coronavirus (including links to press releases): <https://www.hants.gov.uk/socialcareandhealth/coronavirus>
- Latest information on coronavirus: <https://www.gov.uk/coronavirus>
- NHS information on coronavirus: <https://www.nhs.uk/conditions/coronavirus-covid-19/>
- FAQ from the Cabinet Office: <https://www.gov.uk/government/publications/coronavirus-outbreak-faqs-what-you-can-and-cant-do/coronavirus-outbreak-faqs-what-you-can-and-cant-do>
- PPE guidance hub: <https://www.gov.uk/government/collections/coronavirus-covid-19-personal-protective-equipment-ppe>
- Guidance for local government: <https://www.gov.uk/guidance/coronavirus-covid-19-guidance-for-local-government>
- County Councils Network (CCN) coronavirus information pages: <https://www.countycouncilsnetwork.org.uk/coronavirus-information-for-local-authorities/>
- Local Government Association (LGA) councillor guidance: <https://www.local.gov.uk/covid-19-outbreak-councillor-guidance>

Deborah Harkin
Assistant Chief Executive