

## Local context

### Mental health

On World Mental Health Day (10 October), the County Council will re-launch [The Five Ways to Wellbeing](#) webpages with new information, advice and further resources to specifically address the challenges created by the Covid-19 pandemic. This promotes five ways to help look after and boost mental wellbeing, these include: connecting with others, being active, continuing to learn, giving to others and taking notice (being mindful). A range of different solutions are provided for people, based on the time they have available and can be tailored to suit various situations. Those who are struggling with their mental health are signposted to find [urgent support](#).

### Solent LEP Peer Networks

The Solent Local Enterprise Partnership (LEP) has [announced](#) the creation of a series of peer networks through their Solent Growth Hub for small and medium-sized enterprises (SME) business owners. In response to the isolation that some business owners have reported feeling during the Covid-19 pandemic and as part of a wider of [national programme](#), the peer networks will deliver action learning through group sessions, and one-to-one support will also be provided.

### Hampshire libraries

Following the public consultation into staffed opening hours for Hampshire Libraries, details about the upcoming changes, which the County Council plans to have fully in place by 1 January 2021, are now available on the [County Council's website](#). Currently, the temporary opening hours remain in place across many of Hampshire's libraries as part of our ongoing work to keep each venue Covid-secure for residents and staff.

### Campaigns

The County Council continues to promote and proactively target key public health messages to Hampshire residents. The below image shows relevant campaigns activity over the last week (2 – 9 October).

The [Rule of Six animation](#) has been one of the County Council's most successful Covid-19 animations. It was launched on 29 September on platforms including Facebook, Instagram and Google Display Network and has been well received with a high number of clicks and shares.

A new campaign on [social distancing](#) will launch today (9 October) on Facebook and YouTube. The short and informative [animation](#) reminds people why safely distancing at two metres from people they don't live with is vital to reduce the spread of Covid-19.

## Social media campaigns

### Themes covered

- Rule of six
- Car sharing
- When to self-isolate
- Hampshire Covid data
- Hands, Face, Space
- NHS Covid app
- Social distancing

**30**

Social media posts

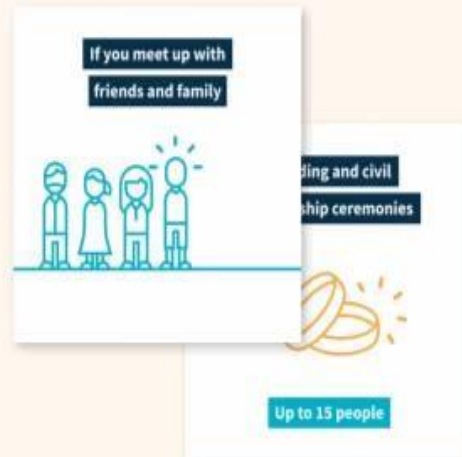
**287,824**

People reached

**265,160**

Video views

### Most successful post



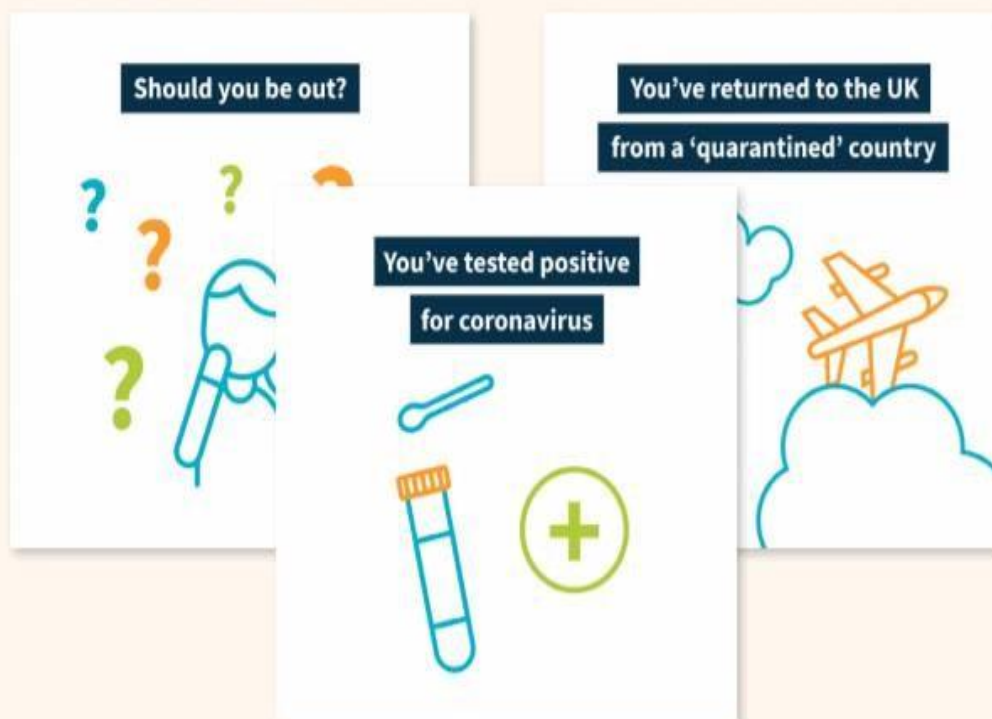
### Rule of six animation

**Over 1,800**

Positive interactions - likes, comments, shares

### Example

#### When to self-isolate animation



# National context

## Communities

### Enforcement

The Ministry of Housing, Communities and Local Government has [announced](#) that police forces and councils will receive an additional £60 million to step up their enforcement of Covid-19 rules as part of the Government's plans to tackle the rise in infections. Local authorities will be able to use the funding to increase their compliance work and enforcement checks on businesses.

The money is evenly split between council and the police and the councils' share has been allocated to unitary and district councils, so the County Council will not receive anything. The Hampshire PCC allocation is £778,166.

### Police loss recovery scheme

The Home Office has [published](#) new guidance for Police and Crime Commissioners on how to access the income loss recovery scheme for lost sales, fees and charges as a result of Covid-19.

### Funding for heritage organisations

The Government has [announced](#) how the first tranche of funding from the £1.57 billion Culture Recovery Fund has been allocated to support heritage organisations affected by Covid-19. It includes £925,000 for **Sir Harold Hillier Gardens**.

### Local Restrictions Map

The House of Commons Library has [produced](#) an interactive map showing areas with local restrictions, which gives a top-line summary of the current restrictions and a link to the relevant guidance pages on the Government's website for each area.

## Children and education

### Universities advice line

The Government has launched a new universities advice service to provide advice on a single confirmed case of Covid-19 within a university.

## Adults' social care and public health

### Lab partnerships

The Department of Health and Social Care (DHSC) has [announced](#) new partnership agreements with four London university labs that will increase testing capacity by tens of thousands over the coming months.

### REACT-1

The fifth report of the country's largest study on rates of Covid-19 infections in the general population in England has been [published](#) today, after 175,000 volunteers were tested. The

Imperial College London and Ipsos MORI findings show 1 in 170 people in England had Covid-19 between 18 September and 5 October with 45,000 new infections every day.

## Economy and business

### Job Support Scheme

The Government's Job Support Scheme (JSS) will be expanded to support businesses which are required to close their premises as a result of Covid-19 restrictions, the Chancellor [announced](#) today (9 October). The Government will support eligible businesses by paying two thirds of each employees' salary (or 67%), up to a maximum of £2,100 a month. Additionally, cash grants for businesses required to close in local lockdowns were also increased to up to £3,000 per month.

### Production and services industries

The Office for National Statistics has [published](#) an analysis of monthly growth for the production and services industries between July and August, highlighting the impact of Covid-19.

## Environment, transport and travel

### Travel corridors

The Department for Transport has [confirmed](#) that no countries have been removed from travel corridor list this week. However, the Greek islands of Lesbos, Santorini, Serifos, Tinos and Zakynthos have been added following a decrease in confirmed cases of Covid-19. Therefore, from 4am Saturday 10 October, people arriving in England from Lesbos, Santorini, Serifos, Tinos and Zakynthos will not need to self-isolate for 2 weeks.

### Global Travel Taskforce

The Government has [announced](#) a new [Global Travel Taskforce](#) to support the travel industry and the safe recovery of international travel. They will work with industry on how to safely reduce self-isolation periods with testing and will also consider a wide range of other measures to support the travel sector including developing a global framework to make travelling easier.

## National Covid-19 data

As of 4pm on 9 October, the total number of lab-confirmed cases was **561,815**. The daily number of lab-confirmed cases was **17,540**. The total number of Covid-19 associated deaths within 28 days of a positive test was **42,592**, with **77** deaths reported on the day. The data is available to [view online](#).

The R number range for the UK is **1.2-1.5** and the growth rate range is **+4% to +9%** per day as of 9 October.

## Additional links

- Hampshire County Council webpages on coronavirus (including links to press releases): <https://www.hants.gov.uk/socialcareandhealth/coronavirus>
- Latest information on coronavirus: <https://www.gov.uk/coronavirus>

- NHS information on coronavirus: a <https://www.nhs.uk/conditions/coronavirus-covid-19/>
- FAQ from the Cabinet Office: <https://www.gov.uk/government/publications/coronavirus-outbreak-faqs-what-you-can-and-cant-do/coronavirus-outbreak-faqs-what-you-can-and-cant-do>
- PPE guidance hub: <https://www.gov.uk/government/collections/coronavirus-covid-19-personal-protective-equipment-ppe>
- Guidance for local government: <https://www.gov.uk/guidance/coronavirus-covid-19-guidance-for-local-government>
- County Councils Network (CCN) coronavirus information pages: <https://www.countycouncilsnetwork.org.uk/coronavirus-information-for-local-authorities/>
- Local Government Association (LGA) councillor guidance: <https://www.local.gov.uk/covid-19-outbreak-councillor-guidance>

**Deborah Harkin**  
**Assistant Chief Executive**