

## Local context

### Hampshire Library Service

The Library Service has [confirmed](#) that from Monday 12 October, fines on overdue items will be reinstated. Existing fines have been frozen since 31 March due to the Covid-19 pandemic but will begin to increase again from 12 October if items are not returned. Customers can [pay for fines online](#) or at libraries. Where possible, customers are asked to use cashless payments.

Existing loans may also become due for return from 12 October. If customers wish to keep loans longer, they can [renew online](#), or by using the [Spydus Mobile app](#) on a smartphone or by calling on 0300 555 1387, as long as the items have not been reserved by someone else.

To ensure the safety of visitors and staff, all returned items are currently being quarantined for 72 hours. It may take up to five days to process returns and during this time items will still appear on customer accounts as not returned. If an item becomes overdue during this period, customers may see pending charges and fines temporarily appearing on their account. However, any charges and fines of this kind will not be charged and will be removed from customer accounts once the items have been processed.

### Campaigns

The County Council continues to promote and proactively target key public health messages to Hampshire residents. The below shows relevant activity over the last week (25 September – 2 October).

## Social media campaigns

### Themes covered

- Self-isolation
- NHS Test & Trace app
- Rule of six
- Hands-face-space
- Car sharing and safer travel advice
- COVID-19 data dashboard

**21**

Social media posts

**158,363**

People reached

**25,130**

Video views

### Most successful post



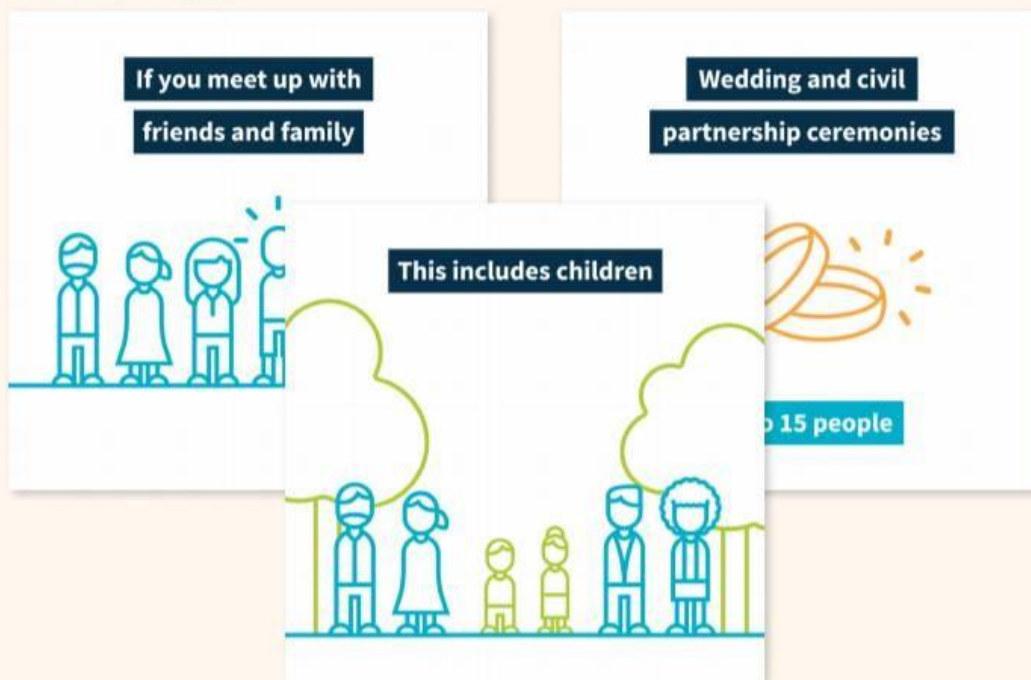
Self-isolation (targetting 20-40 males)

**91,750**

People reached

### Example

#### Rule of six animation



## Local Covid-19 data

The County Council will today (5 October) [publish](#) the latest weekly Covid-19 data dashboard. The data shows a total number of cases in Hampshire of **6,251** and **328** cases confirmed in the last seven days, which is an increase of **127**.

*Please note that the number of Hampshire cases tested between 25 September and 2 October has been revised. This is due to a [national issue identified](#) in the automated process where a proportion of positive cases over recent days had stalled in the system. The issue has been resolved and data is correct at 5 October.*

Hampshire's overall infection rate is **434.9** cases per 100,000 population. The county's current weekly rate stands at **12.4** cases per 100,000 population.

There have been **1,072** Covid-19 associated deaths in Hampshire since March, and **3** deaths in the last seven days.

The full data dashboard is available on the [Keep Hampshire Safe webpage](#). [Data on Hampshire districts](#) is also available.

## Health Infrastructure Plan

The Government has [confirmed](#) funding for 40 hospitals, with a further 8 schemes invited to bid for future funding. This will ultimately deliver 48 hospitals by 2030 as part of a package worth £3.7 billion.

The published list states that **Hampshire Hospitals NHS Foundation Trust** (HHFT) will receive funding for a new hospital at Basingstoke and North Hampshire Hospital and major refurbishment at Royal Hampshire Hospital in Winchester. However, the HHFT [press release](#) notes that that this is not binding and that neither the location of any new facility, nor the make-up of services provided, will be decided ahead of a period of formal public consultation, due to take place early next year.

## National context

### Communities

#### Domestic abuse

The Ministry of Housing, Communities and Local Government (MHCLG) has [announced](#) new funding of up to £6 million for local authorities to prepare for the domestic abuse duty. The aim of the new funding is to allow councils to plan accommodation and specialist services ahead of the Act coming into force and to ensure that services are joined up across the country.

### Children and education

#### Student sponsors and migrants

The Home Office has [updated](#) the guidance for student sponsors, migrants and short-term students on temporary concessions in response to the outbreak of Covid-19.

# Adults' social care and public health

## Delayed reporting of cases

Public Health England has [issued](#) a statement on the delayed reporting of Covid-19 tests. The delay, due to a technical issue, resulted in 15,841 cases between 25 September and 2 October not being included in the reported daily Covid-19 figures.

## Social care service continuity

The Department of Health and Social Care (DHSC) is [undertaking](#) a review of service continuity and social care markets, supported by the LGA and ADASS. The review asks councils to assess risks to service continuity arising from the state of the local provider market, to set out what contingency plans they have to mitigate these risks, to flag up any external or mutual support that would be helpful, and to share any good practice.

## Test and Trace Support Payment Scheme

DHSC has [issued](#) the latest updated operational guidance and Q&As for the Test and Trace Support Payment system directly to council Chief Executives and Finance Directors.

## Mental health

A new report [published](#) by the Centre for Mental Health warns that up to 10 million people may need mental health support in the aftermath of the Covid-19 pandemic.

# Economy and business

## Financial management data collection

MHCLG are extending the deadline for submissions of Covid-19 returns on the DELTA system to 23.59 on Tuesday 06 October due to known issues with the system.

## Job Retention Bonus

The Treasury has [published](#) further information on how businesses can claim the Government's Job Retention Bonus. New guidance sets out information for employers who have furloughed employees on how to claim the bonus.

# National Covid-19 data

As of 4pm on 5 October, the total number of lab-confirmed cases was **502,978**. The daily number of lab-confirmed cases was **12,594**. The total number of Covid-19 associated deaths within 28 days of a positive test was **42,350**, with **33** deaths reported on the day. The data is available to [view online](#).

The R number range for the UK is **1.3-1.6** and the growth rate range is **+5% to +9%** per day as of 2 October.

## Additional links

- Hampshire County Council webpages on coronavirus (including links to press releases): <https://www.hants.gov.uk/socialcareandhealth/coronavirus>
- Latest information on coronavirus: <https://www.gov.uk/coronavirus>
- NHS information on coronavirus: <https://www.nhs.uk/conditions/coronavirus-covid-19/>

- FAQ from the Cabinet Office:  
<https://www.gov.uk/government/publications/coronavirus-outbreak-faqs-what-you-can-and-cant-do/coronavirus-outbreak-faqs-what-you-can-and-cant-do>
- PPE guidance hub: <https://www.gov.uk/government/collections/coronavirus-covid-19-personal-protective-equipment-ppe>
- Guidance for local government:  
<https://www.gov.uk/guidance/coronavirus-covid-19-guidance-for-local-government>
- County Councils Network (CCN) coronavirus information pages:  
<https://www.countycouncilsnetwork.org.uk/coronavirus-information-for-local-authorities/>
- Local Government Association (LGA) councillor guidance: <https://www.local.gov.uk/covid-19-outbreak-councillor-guidance>

**Deborah Harkin**  
**Assistant Chief Executive**